

FLRD - Fidelux Integrated Double Linear Retrofit & Luminaire

Product Description

Double T5 Integrated Light. The high-efficacy light engine delivers long life and excellent color, ensuring a superior quality lighting. Bars are connectible with optional connecting cord or connector.

Features & Benefits

- Long Life
- Inter connectible - Lower labor cost
- Excellent Glare Control - Right Solution for Retail & Hospitality
- T5 Bars are connectible
- Optional connection cord or connector
- 5 years warranty

Applications

- Offices
- Retail
- Any Indoor application
- Cove lighting
- Troffer Retrofit - T5 Replacement
- High-Bay Replacement - T5 Replacement
- Outdoor/Indoor Sign Applications

Mounting Options

- Surface mount
- Any T5/T8 Retrofit Applications

Regulatory & Voluntary Qualifications

- ETL, Damp Location under covered ceiling, Indoor use only
- Most of our products are DLC listed, qualifying them for the highest rebates. Please check individual product specs for DLC status. Refer to DLC website by clicking this link: <https://www.designlights.org>



Performance Summary

Efficacy up to: 133 l/pw

CRI up to: 84.6 cri

CCT: 3000K / 4000K / 5000K

Dimming: Non Dim

Operating Temp: -4°F to 104°F (-20°C to 40°C)

Input Voltage: 120-277vac

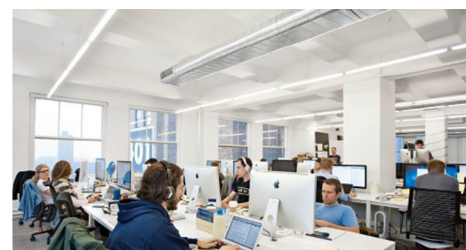
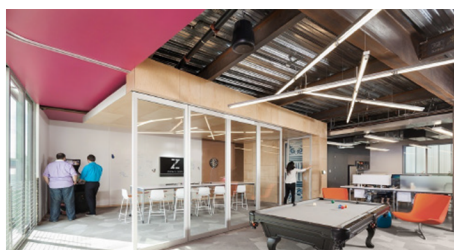
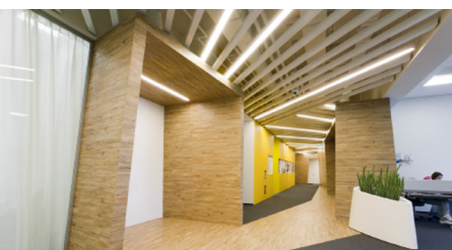
Operating Frequency: 50 / 60Hz

Power Factor up to: >0.95

Beam Angle: 120°

Dimension: 2, 3, 4, 5, 6, 8 feet

L70 Hrs: 50,000+ Hrs (TM21)



FLRD Series Specification Summary

DATA SOURCE							
Product Number	FLRD2-15W	FLRD3-25W	FLRD4-30W	FLRD4-40W	FLRD5-40W	FLRD6-44W	FLRD8-60W
Size	2FT	3FT	4FT	4FT	5FT	6FT	8FT
Nominal Efficacy l/pw @ 3000k	120	111	133	130	103	114	110
Input Power: Watts @ 3000k	13.6	24.8	28.5	37.8	34.7	37.6	58.2
Lumens @ 3000K	1637	2673	3809	4907	3573	4219	6408
Lumens @ 4000K	1650	2775	3900	5200	4200	4400	6600
Lumens @ 5000K	1650	2775	3900	5200	4200	4400	6600
Qualifications	ETL, DLC4.4	ETL, DLC 4.4	ETL, DLC 4.4		ETL, DLC 4.4	ETL, DLC 4.4	ETL, DLC 4.4
CRI	83	81.3	82.8	83	84.6	81.2	81.2
Power Factor	0.91	0.92	0.95	0.93	0.95	0.95	0.94
THD @ 120vac	16.29%	5.93%	16.85%	17.13%	19.04%	18.04%	5.91%
CCT/Kelvin Temp Options	30 / 40 / 50 Kelvins						
Operating Frequency	50 / 60 Hz						
Dimming	Non Dim						
Input Voltage Options	120-277vac						
L70 Lifetime Hrs	55,000+ Hours (TM21)						
Optics / Beam Angles	120 degree Beam Angle						
Lens Types	Frosted (standard) / Clear Special Request						
Ambient Working Temp	-4°F to 104°F (-20°C to 40°C)						
Linear Configuration	200W Limit per continuous Linear Light runs						
Connection Options	Power input cord, Male, Type A- Linkable Power cord, Type B -Joining connector						
Max Dimensions (in)	1.61"x1.42"x24"	1.61"x1.42"x36"	1.61"x1.42"x48"	1.61"x1.42"x48"	1.61"x1.42"x60"	1.61"x1.42"x72"	1.61"x1.42"x96"
Total Weight	0.85 lbs	1.275 lbs	1.70 lbs	1.70lbs	2.125 lbs	2.55 lbs	3.40 lbs
Limited Warranty	5 Yrs.						

Notes

Values are nominal unless noted +/- 5%
Specifications change without notice

FLRD Series Product Ordering Guide

Example: FLRD3-25W-40K

Product	CCT/Color Temp	Lens Type	Voltage
FLRD2-15W	30K (3000 Kelvin)	Blank(Frosted)	Blank (120-277vac) STD
FLRD3-25W	40K (4000 Kelvin)		
FLRD4-30W	50K (5000 Kelvin)		
FLRD4-40W			
FLRD5-40W			
FLRD6-44W			
FLRD8-60W			

Field Installed Accessories

Power Cord	Power input power cord with Female to Striped wire ends (comes 1 per fixture)
Type A, Linkable Power cord	Type A, Linkable Power Cord with Male to Female ends (comes 1 per fixture)
Type B, Joining connector	Type B, Small connector to join fixtures, Flush connector with Male to Female ends (comes 1 per fixture)
Frosted lens	Frosted Lens cover (specified lens comes standard)
Clear lens	Clear Lens (special order)
Surface Mount Clips	Clips for Surface mount (comes 2 per fixture with hardware)
3 pin End cover	Blank cover for 3 pin connector (comes 1 per fixture)

FLRD Series Standard Accessories (items below come with every fixture)

Length for power cord or connection cable can be customized



9" inch power cord



Type A - (9") inch connection cable



Type B - Small connector



Clips



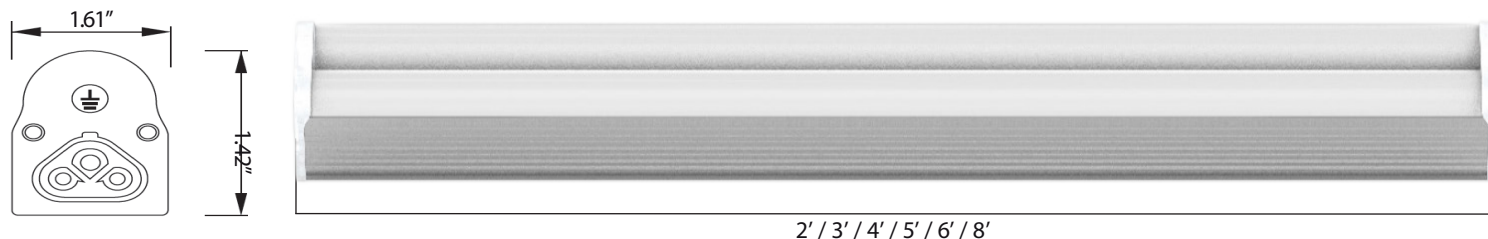
Anchors & Screws



Protective cover

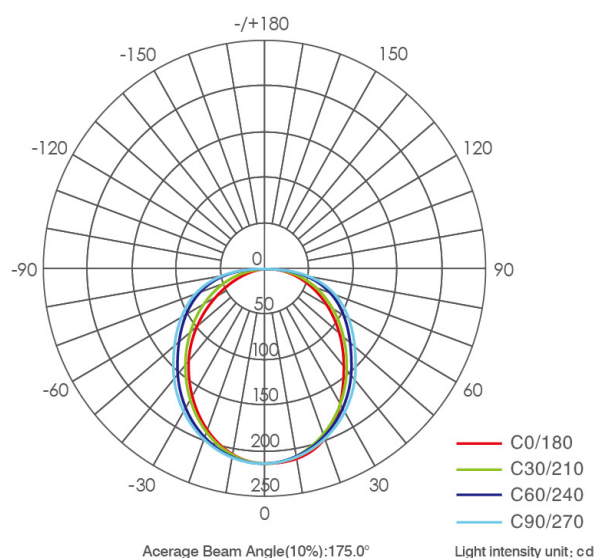
FLRD Series Design Details & Photometry

FLRD Series Design Details

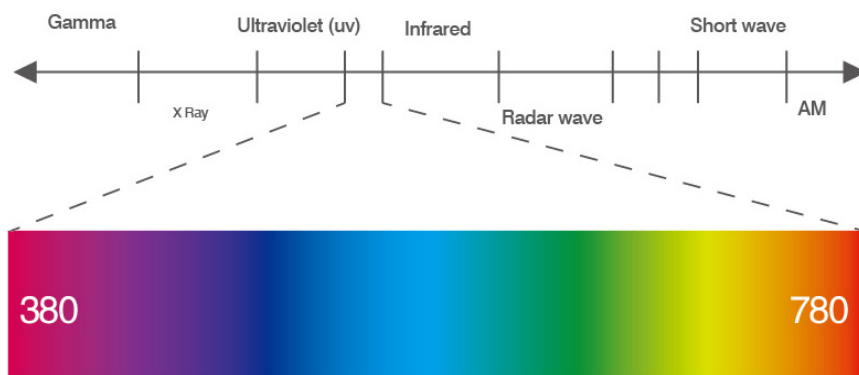


Product Number	FLRD2-15W	FLRD3-25W	FLRD4-30W		FLRD5-40W	FLRD6-44W	FLRD8-60W
Length, ft	2	3	4		5	6	8
Width, inches	1.10	1.10	1.10		1.10	1.10	1.10
Height, inches	1.42	1.42	1.42		1.42	1.42	1.42

FLRD Series Light Distribution Curve



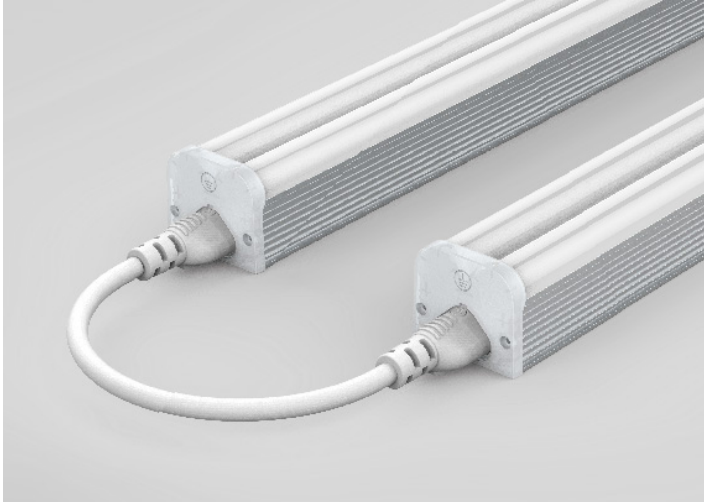
FLRD Series Electromagnetic Spectrum Of Visible Light



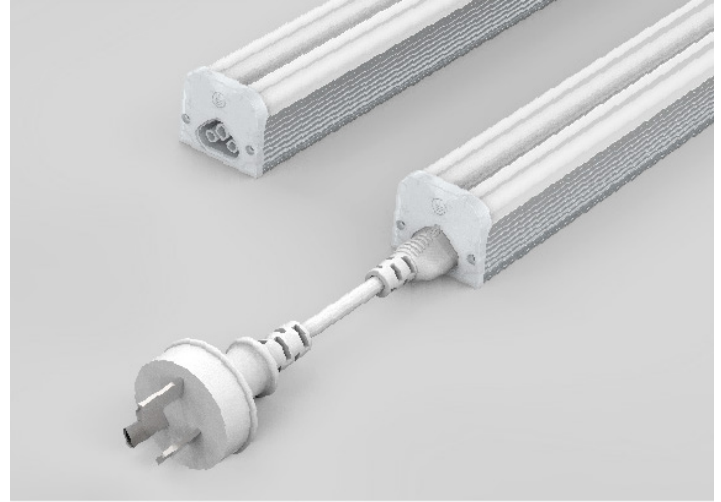
FLRD Series Installation Instructions

For all FLRD Series Product

FLRD Series Connection Way

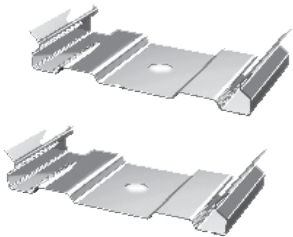


Mode A: Connection Way



Mode B: Can be connected

FLRD Series Installation Accessories



Clips



9" inch power cord



Anchors & Screws

FLRD Series Installation Instructions

For all FLRD Series Product

WARNING ⚠

Disconnect power before installation, must be installed by licensed electrician.

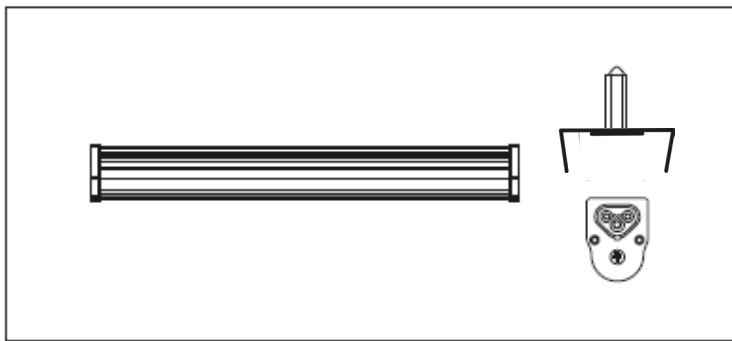
Please use it under correct input power range.

This tube is non-dimmable.

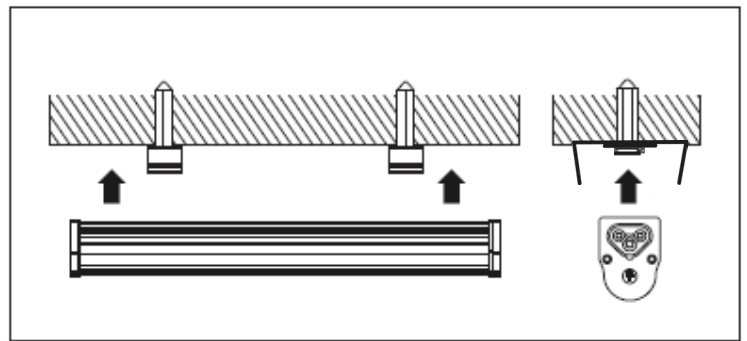
Do not use in the outdoor environment.

If the product does not operate properly, check connections after the power is turned off, in case of failure replace the fixtures.

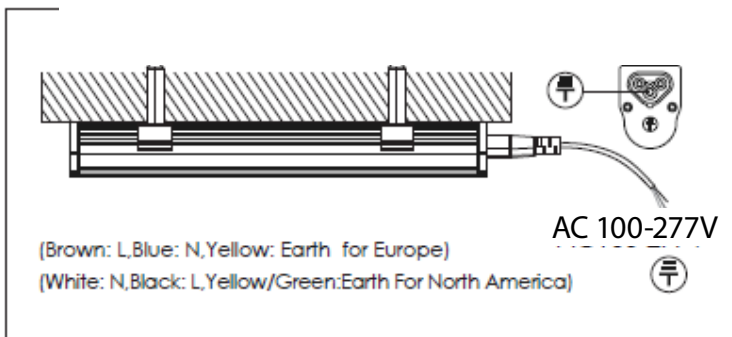
1. Measure and mark location of FLRD tube then anchor the clip to surface



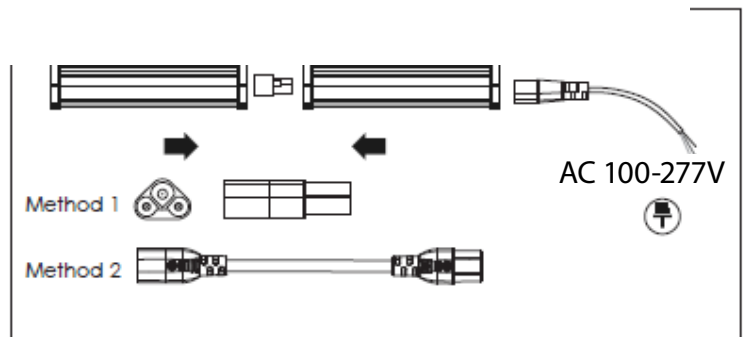
2. Fix the FLRD tube to the ceiling or wall using the clip



3. Connect the power cord to the FLRD tube



4. Connect up by linkable connector, done



Caution: The integrated tubes can be connected up to 200 watts total

