

FPLHB - Fidelux Premier Linear Highbay

Product Description

Fidelux LED Linear High Bays meet the challenging maintenance, safety, and performance requirements of industrial environments through an unbeatable combination of efficacy and lumen output. Featuring custom control options giving you more energy savings. The fixtures are designed to replace T8 and T5 fluorescent, as well as HID fixtures, in locations with 10 to 40 foot ceilings, including big box retailers, gymnasiums, manufacturing facilities and warehouses.

Features & Benefits

- Emergency pack option up to 40w-90 min
- PIR - Line voltage occupancy sensor, (0-10V) option
- No Lens & Milky lens options
- 3ft power cord (whip) is standard on all fixtures
- Wire guard & safety tether options
- Aluminum heat sink designed to perform at warm ambient temperatures
- Ideal one-for-one replacement of conventional lighting systems such as & fluorescent

Applications

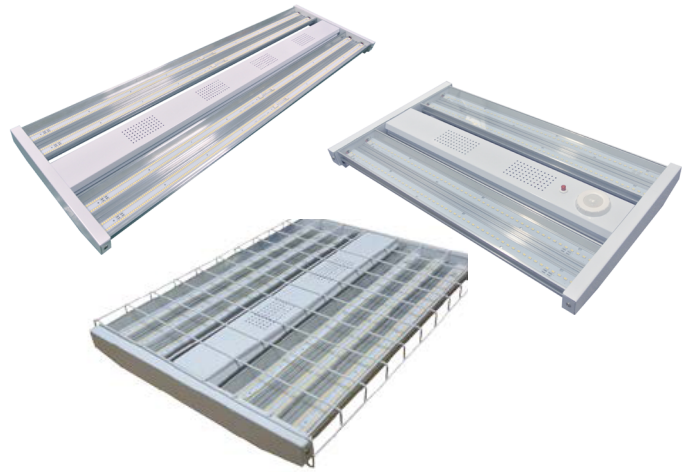
- Retail
- Warehouses
- Manufacturing applications

Mounting Options

- Surface Mount (SMK) Field Installed
- Suspension Mount Kit (SUK) includes 2 hooks and 2-3' aircraft cables
(power cord sold separately)

Regulatory & Voluntary Qualification

- UL, DLC Premium
- Most of our products are DLC listed, qualifying them for the highest rebates. Please check individual product specs for DLC status. Refer to DLC website by clicking this link:
<https://www.designlights.org>



Performance Summary

Efficacy up to: 156 l/pw

CRI: 82.8 cri

CCT: 30/35/40/50K

Dimming: 0-10v Dim

Operating Temp: -30° - +55°C Ambient

Input Voltage: 120-277vac,

Operating Frequency: 50 / 60Hz

L70 Lifespan: 100,000+ hours (based on TM21)

Dimension: 14"x24", 17"x24", 17"x46"



FPLHB Series Specification Summary

DATA SOURCE	Data DLC	Data DLC	Data DLC
Product Number	FPLHB-100W	FPLHB-150W	FPLHB-200W
Efficacy l/pw Nominal	154 l/pw	155 l/pw	156 l/pw
Wattage Nominal	97.09 Watts	150.8 Watts	197.9 Watts
Lumens @ 3000K	14,437	23,374	29,650
Lumens @ 3500K	14,437	23,374	29,650
Lumens @ 4000K	14,600	23,400	30,000
Lumens @ 5000K	14,952	23,446	30,872
THD @ 120VAC	7.19	7.07	8.11
CRI	82.6	82.8	82.8
Qualifications	UL, DLC Premium	UL, DLC Premium	UL, DLC Premium
Power Factor	> 0.994	> 0.994	> 0.994
Input Voltage Options	120-277vac,	120-277vac,	120-277vac,
CCT/Kelvin Temp Options	30/35/40/50 Kelvin	30/35/40/50 Kelvin	30/35/40/50 Kelvin
Dimming	0-10vac	0-10vac	0-10vac
Beam/Field Angles	120°	120°	120°
L70 Lifespan	100,000+ hours L70 (based on TM21)	100,000+ hours L70 (based on TM21)	100,000+ hours L70 (based on TM21)
Operating Temperature	-30°C to +55°C		
Max Dimensions (in)	14" x 24"	17" x 24"	17" x 46"
Total Weight	8.20 lbs	11.20 lbs	13.7 lbs
Limited Warranty	10 Yrs.		

Notes

Values are nominal unless noted +/- 5%
Specifications change without notice

FPLHB Series Product Ordering Guide

Example: FPLHB-100W-40K-D-ML-PC3-SMK-ST

Product	CCT/Color Temp	Voltage	Controls & Dimming	Emergency Backup	Lens	Power Cord	Mounting Options <i>Field Installed</i>
FPLHB-100W	30K (3000K)*	UNV (100-277vac) STD	D-(0-10v Dimming) STD	EM20 (20w,90 Min) 100w 200w only, 150w is external mount , field	ML (Milky Lens)	PC3 (3ft power cord) STD	SUK(Suspension Kit)
FPLHB-150W	35K (3500K)*		SESD- (PIR- 120-277vac Step Dim Occupancy Sensor with Remote Programming Only)		N (No Lens)STD	PC6 (6ft Power Cord)*	SMK (Surface Kit)
FPLHB-200W	40K (4000K) 50K (5000K)		SESD-RC (Hand-held Remote Control for SESD Programming) Standard Lens is optimized for 10ft-40ft mounting height , Below 10ft use Wide Lens (LW1 Consult Factory			PC10 (10ft Power Cord)*	ST (Safety Tether)
							WG100 (100W one piece Wire guard) WG150 (150W one piece Wire guard) WG200 (200W one piece Wire guard)

* = Special Order, longer lead times & additional costs can apply

Controls & Dimming Options , *Field Installed*

(All Controls & Dimming part numbers are selected from ordering bar above)

EM20	20w-Emergency Pack with 90 Minute Battery Life. (100w & 200w are factory integrated only, 150w is field installed & externally mounted on back of fixture by certified installer, EM pack is shipped in separate box with installation instructions)
SESD	PIR- 120-277vac Step Dim Occupancy Sensor with Remote Programming Only, Sensor is shipped with (Default settings- 5min Stand-by Time Delay, Step Down Dimming at 20% and 60min dimming time delay.) See SESD spec sheet for addition seeting options
SESD-RC	SESD -Hand-held Remote Control for SESD sensor programming,

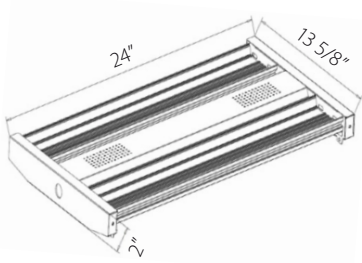
Mounting Options, *Field Installed*

(All Controls & Dimming part numbers are selected from ordering bar above)

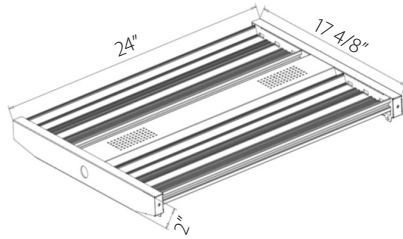
ST	3ft Safety Teather (aircraft cables with clips, holds up to 100lbs) <i>Field Installed</i>
SMK	Surface Mounting Kit Sold as separate Line item . <i>Field Installed</i>
SUK	Suspension Mounting Kit (kit includes 2-hooks- & 2-3' aircraft cables) <i>PC6' Power cord needed sold separately</i>
WG100	One Piece wire Guard for 100w fixture, <i>Field installed</i>
WG150	One Piece wire Guard for 150w fixture, <i>Field Installed</i>
WG200	One Piece wire Guard for 200w fixture, <i>Field Installed</i>

FPLHB Series Design Details & Photometry

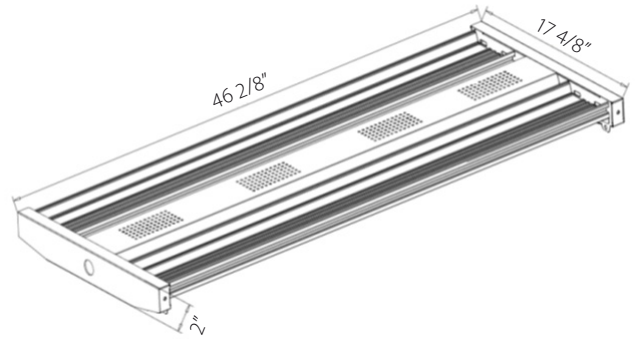
FPLHB-100W



FPLHB-150W



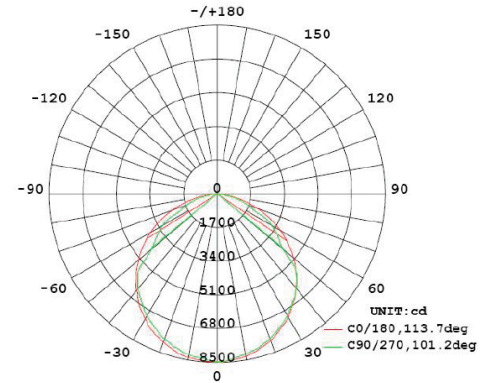
FPLHB-200W



Photometry

FPLHB-150W-40K-UNV-D

Luminaire photometry has been conducted by a NVLAP accredited testing laboratory in accordance with IESNA LM-79-08. IESNA LM-79-08 specifies the entire luminance as the source resulting in a luminaire efficiency of 100%.



Zonal Lumen Density												
Y	C0	C45	C90	C135	C180	C225	C270	C315	Y	Zone	Total	%Lums, Lamp
10	8316	8202	8206	8239	8368	8250	8249	8207	0-10	794.9	794.9	3.5, 3.5
20	7873	7732	7777	7839	7954	7860	7796	7757	10-20	2273	3068	13.5, 13.5
30	7187	7030	7076	7124	7282	7147	7108	7058	20-30	3447	6515	28.7, 28.7
40	6186	6092	6245	6203	6363	6224	6252	6124	30-40	4171	10685	47.1, 47.1
50	5037	4981	4344	5070	5195	5074	4314	5011	40-50	4322	15007	66.2, 66.2
60	3676	3220	3155	3351	3893	3282	3196	3182	50-60	3670	18677	82.3, 82.3
70	2166	1661	1609	1803	2419	1769	1626	1653	60-70	2569	21246	93.7, 93.7
80	704.8	452.9	353.8	529.7	901.8	553.3	348.2	456.0	70-80	1214	22460	99, 99
90	1.373	0.5752	0.4088	0.5813	2.340	1.439	1.091	1.441	80-90	167.8	22628	99.8, 99.7
100	2.096	1.240	0.8143	1.083	5.254	4.445	3.278	4.517	90-100	1.916	22630	99.8, 99.8
110	4.752	3.442	3.130	3.135	9.923	9.937	7.024	9.808	100-110	4.710	22635	99.8, 99.8
120	5.884	4.882	4.696	4.699	13.88	13.95	11.85	13.38	110-120	7.432	22642	99.8, 99.8
130	8.710	5.357	6.535	4.991	18.60	17.05	16.68	16.42	120-130	9.049	22651	99.9, 99.9
140	9.999	6.223	7.691	6.301	24.85	20.17	18.93	18.60	130-140	9.854	22661	99.9, 99.9
150	11.37	8.576	9.254	8.122	23.54	21.09	21.65	19.55	140-150	9.276	22670	99.9, 99.9
160	11.77	9.761	10.62	9.212	24.35	20.32	22.67	19.07	150-160	7.362	22678	100, 100
170	19.98	15.92	18.63	14.52	22.90	20.67	24.03	20.48	160-170	5.024	22683	100, 100
180	20.65	18.79	22.94	17.15	20.88	18.53	22.94	19.75	170-180	1.927	22685	100, 100
DEG	Luminous Intensity: cd									Unit: 1m		

FPLHB Series Installation Instructions

For all FPLHB Series Mounting (Hook Chain, Suspended & Pendant)

WARNING:

To avoid the risk of fire, or electric shock this product should be installed, inspected, and maintained by a qualified electrician only. Installation should be completed by an individual familiar with the construction and operation of the luminaire. Installation of luminaire must be in accordance with national and local building and electrical codes.

Safety Warning: To avoid electric shock: Be certain electrical power is OFF before and during installation and maintenance. Luminaire must be supplied by a wiring system with an equipment grounding conductor.

To avoid burning hands: Make sure lens and housing are cool when performing maintenance.

To avoid product degradation: Make sure the wire supply voltage is the same as the luminaire supply. Use proper supply wiring as specified on the luminaire nameplate. Avoid use in environments containing sulfur, chlorine or other halides, methyl acetate or ethyl acetate, cyanoacrylates, glycol ether, formaldehyde or butadiene.

Notes: Instructions do not cover all details and all possible product configurations. Do not restrict luminaire ventilation. Ensure LED luminaire is not covered with material that will prevent convection or conduction cooling. Ensure LED luminaire has the correct polarity before installation. Avoid exposing wiring to metal edges and sharp objects.

Maintenance: Perform visual, electrical and mechanical inspections on a regular basis. The environment and frequency of use should determine this. However it is recommended that checks be made at least once a year. Electrically check to make sure that all connections are clean and tight. Mechanically check that all parts are properly assembled.

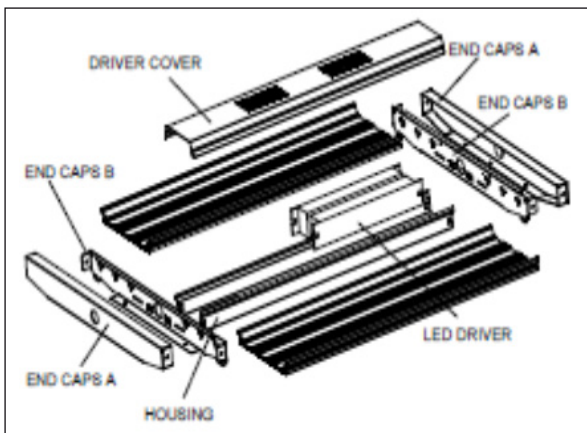
Suspended Mounting Options



Surface Mount



Exploded Views



Wiring Diagram

