

Description

The wireless Bluetooth switch is battery-powered that provides auto-brightness, dimming, and three scene control. A true wire-free switch can communicate with other devices via Bluetooth communication. The fixtures include LED troffer, LED wrap light, LED linear light, LED down light and more.

Features

- Button lifespan: 50,000 times. During each pressing button, it consumes about 0.002mAh.
- In one QR code (mesh network), it's necessary to connect at least one fixture before deleting the switch. But when adding the switch, the QR code doesn't need to have a fixture.
- Powered with two off-the-shelf AAA Lithium size batteries, ENERGIZER L92 Ultimate Lithium recommended.
- Communicate with devices via Bluetooth 4.0 communication, 2.4GHz.
- Soft-click button control: one for auto-brightness, one for dimming up, one for dimming down, one for ON/OFF, and one for scene control.
- LED troffer, LED wrap light, LED linear light, LED down light can be controlled by the wireless switch.
- No wires needed. Easy installation and maintenance. Suitable for surface-mounted or recessed in the wall. Or just leave it on the desk.
- When the voltage less than 2.6V, press any buttons and the red light flashes. It gives a hint that the battery should be replaced.



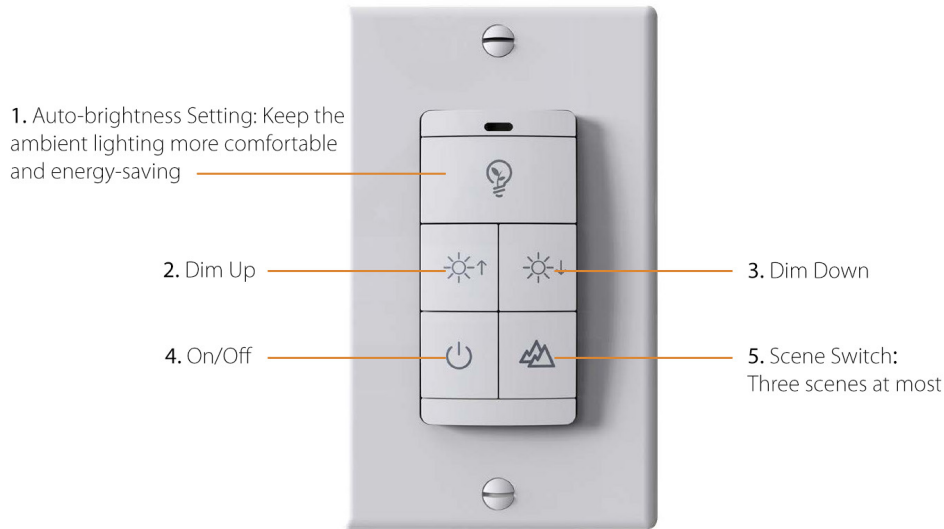
Specification

Electrical	Battery Type	2 AAA Lithium Batteries (not supplied)
	Maximum Fixtures	Up to 100 fixtures controlled at a time
Mechanical	Dimensions	4.53"H x 2.75"W x 1.28"D (115mm x 70mm x 32.6mm)
	Weight	8.3 grams (without battery)
	Mounting	Surface-mounted Recessed in the wall On the desk
Environmental	Warrantied Operating Temperature	-10°C ~ 45°C (14°F ~ 113°F)
	Relative Humidity	≤90% RH
	Range	Up to 328ft (~100m) in Free Space / line of sight
Wireless	Communication mode	Bluetooth
	Programing Tool	Fidelux Mobile App
Security	Application Data Encryption	AES-128-bit

CAUTION:

1. Do not place the switch in a large area of metal or near a strong electromagnetic wave zone.
2. After connected to APP and bound to the fixture or fixture group, the switch can control the related fixture or fixture group.

Diagram



REMARK:

1. Press button 1 and 2 together over 2 seconds. When the indicator turns orange and flashes, release the button to achieve reset function and enter pairing mode. The switch can be added by APP searching within 30 seconds. It will stop searching when pressing any buttons within 30 seconds.
2. The "On" function is the fixed 100% output brightness.



Dimensions

