



Fidelux

Creating. Connecting. Conserving.

ESTABLISHED 2012

FALL 2021

LIGHTING PRODUCTS

CAPABILITIES

SERVICES



Creating. Connecting. Conserving.

OUR PROFILE

Fidelux is an affiliate of PRIME AE Group, Inc. (PRIME), a professional services firm with more than three decades of expertise and a nationwide reach. It is listed by the Engineering News Record among the Top 500 engineering design firms in the country. Building on this success, PRIME launched UIC Energy in 2012 to provide top-tier LED lighting solutions to private and public sector clients. UIC Energy soon established itself as an industry leader, and after five consecutive years of growth, was rebranded as Fidelux Lighting in March 2017.

Fidelux means “Trusted Light” in Latin. Our clients’ trust in the quality of our LED products extends beyond our near flawless success rate of 99.99%, ten-year product warranties, and Design Light Consortium (DLC) listings. We are proud to offer second-to-none customer service, sales representatives, distributors, and products, as well as an outstanding leadership team. Customers are guaranteed the best team and the best products when they choose Fidelux.

OUR MISSION

FIDELUX LIGHTING. CREATING. CONNECTING. CONSERVING.

Fidelux creates the best, most technologically-advanced lighting solutions in the industry.

We connect light with technology, engineering, architecture, and businesses in new and innovative ways.

We conserve energy with products that provide reliable, radiant light at a lower cost than ever before.

That’s our mission. That’s Fidelux. **Trusted Light.**

OUR CAPABILITIES

BUILD-TO-ORDER & QUICK SHIP PRODUCTS

Fidelux is able to offer build-to-order to decrease lead time on products with options such as emergency battery packs, sensors, and customized lumen output.

TECHNOLOGY-DRIVEN PRODUCT RANGE

Our contemporary product selection offers the ever-increasing availability of tech including wireless color tuning, Bluetooth direct and mesh control, and circadian scheduling for truly human-centric lighting.

INTEGRATED CONTROL SOLUTIONS

We offer the integration of almost any brand controls or sensor solutions into our lighting products for networked and non-networked systems; furthering this capability, we can also incorporate a range of modules, relays and other control components in our US-based factory in Connecticut.

DESIGN AND LAYOUT

Our team is able to assist you in the design and layout needed to get lighting projects packaged quickly by utilizing industry-standard AGI32 software.

CUSTOM SOLUTIONS

We can modify our current products and develop new products to exacting specifications to address the needs of the industries you serve.

Our versatile in-house product development capabilities include new product development, spec-grade retrofits and customization, and digital controls integration.

Contact us at (203) 774-5653 or info@fidelux.com

FTRV Smart Architectural Troffer with Bluetooth Mesh Control • Commercial Recessed . . .	5
FFP Premium Flat Panel Series • Commercial Recessed	5
FCL Fidelux Compact Linear • Commercial Ceiling	5
FSTRS Smart Stairwell Sensor Series • Commercial / Industrial	6
FRHB Round Premium High-Bay Series • Commercial / Industrial	6
FRHBV Round High-Bay Value Series • Commercial / Industrial	6
FRHBN Round High-Bay NSF Series • Commercial / Industrial	6
FPLHB Premier Linear High-Bay • Industrial	7
FLHBV Linear High-Bay Value Series • Industrial	7
FWP Fidelux Wall Pack Series • Commercial / Industrial	8
FFLD Flood Light Series • Commercial / Industrial	8
FPTA Post Top Acorn Series • Outdoor Area	8
FAR Area Light Series • Outdoor Area	8
Tools & Resources	9



LOOKING FORWARD

Fidelux is active in developing its ever-growing list of products featuring flexible advanced controls and the ability to easily integrate our offerings into existing technology-driven lighting systems. Our focus on the needs of your customers ensures an evolving product selection, echoing modern project requirements and allowing you to stay ahead of the curve.

The option of ordering with built-in, pre-tested sensors and controls provides the flexibility needed for a very wide range of applications, and allows highly efficient installation and commissioning.

Fidelux is an energy-conscious company, working toward enabling all of our fixtures to be Smart Building-capable and providing full control, interoperability, monitoring, and data feedback, saving time, money, and energy.

ADVANCED CONTROLS

Color Tunability

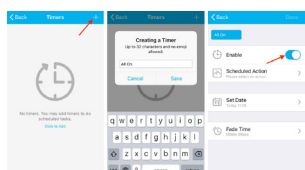
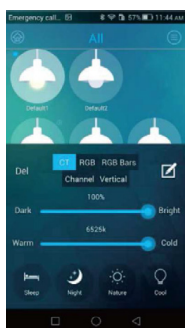
Control color temperature remotely • Circadian Scheduling allows automatic, time-based color adjustments

Scheduling

Time Dependent Programming

Wireless Control and Integration

Bluetooth mesh • Instant and programmed control for individual fixtures and scenes / groups



CONTROL DEVICES

iOS / Android Apps

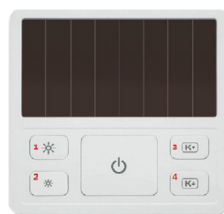
Providing functionality including dimming, color temperature control, grouping, and scene creation

- 30 ft direct control distance; fixture-to-fixture distance 25ft



Wall Mounted

Integration with smartphone and handheld remote operation; Features include Bluetooth mesh control, power-by-solar operation, and scene control



Handheld

Integration with smartphone apps and wall switch controls; provides functionalities including basic switching, color temperature control, and group control



SYSTEM WIRING AND INTEGRATION

Plug & Play

Integrated wiring and plug systems provide fast connectivity and control



Power over Ethernet

(PoE) Powers lighting control via CATx ethernet cabling

Linking

Field-programmable sequencing, zoning, grouping & follow-me microwave motion sensing control

Programmable Drivers

Increased efficiency • Integration of additional sensors and controls • Dim-to-off

- 12V DC output

Sensors

Integrated sensors include Daylight, PIR, and Microwave

Emergency Drivers

Self-testing • Factory installation



ELECTRICIAN REVIEWED AND APPROVED

All Fidelux fixtures are thoroughly reviewed and tested by licensed electricians to ensure quality, ease and safety of installation, and reliable operation. Our electricians are also available to address your project requirements including wiring, installation, mounting, and electrical concerns.

Not all controls are available for all fixtures. Contact Fidelux to discuss your specific needs, and we will work with you to make it happen.

Contact us at (203) 774-5653 or info@fidelux.com

FTRV Smart Architectural Troffer with Bluetooth Mesh Control

COMMERCIAL RECESSED



- 2x2, 2x4
- CCT 3000K / 3500K / 4000K / 5000K
- Efficacy: Up to 151 lm/w
- 0-10V Dimming to 1%
- Bluetooth control and programming
- Also available without Bluetooth controls



Smart Phone App, Solar Wall-Mount Control Panel Access



FFP Premium Flat Panel Series

COMMERCIAL RECESSED



- 1x4, 2x2, 2x4
- CCT 3000K / 3500K / 4000K / 5000K
- Efficacy: Up to 131 lm/w
- 0-10V dimming
- Sensor options
- Surface, drywall, cable, and recessed mounting



FCL Fidelux Compact Linear

COMMERCIAL CEILING



OPTION

- 4' Length
- CCT 3000K / 4000K / 5000K
- Efficacy: Up to 135 lm/w
- 0-10V Dimming
- Integral microwave sensor and emergency battery pack options
- Tethering



FSTRS Smart Stairwell Sensor Series

COMMERCIAL / INDUSTRIAL



VANDALPROOF FEATURES AVAILABLE

- CCT 3000K / 3500K / 4000K / 5000K
- 2', 4' and 8' models
- 18W, 20W, 25W, 30W, 40W, 45W, 60W, 70W, 80W
- Efficacy: Up to 161 lm/w
- 0-10V Dimming
- IK10 Impact Resistant rated
- Sensor & control options



IK08

RoHS COMPLIANT



FRHB Round Premium High-Bay Series

COMMERCIAL / INDUSTRIAL



IP67
RATED



- CCT 3000K / 3500K / 4000K / 5000K
- 100W, 150W, 200W
- Efficacy: Up to 161 lm/w
- 0-10V Dimming
- Corrosion resistant; Natatorium rated
- IK10 Impact Resistant rated
- Sensor & control options

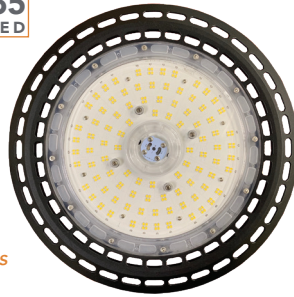


FRHBV Round High-Bay Value Series

COMMERCIAL / INDUSTRIAL



IP65
RATED



OPTION

Internal Sensor
& Control Options

*10 YEAR WARRANTY AVAILABLE. CONTACT FACTORY FOR PRICING.



FRHBN Round High-Bay NSF Series

INDUSTRIAL



IP69K
RATED



- 13 - 16" Diameter
- CCT 3000K / 3500K / 4000K / 5000K / 5700K
- 100W, 120W, 150W
- Efficacy up to: 155 lm/w
- Operating Temperature: -30° ~ +55°C
- IP69K Rated Wash-Down / Steam Clean
- Corrosion & impact resistant



*10 YEAR WARRANTY AVAILABLE. CONTACT FACTORY FOR PRICING.

FPLHB Premier Linear High-Bay

INDUSTRIAL



- 24 and 48" lengths
- CRI 3000K, 3500K, 4000K, 5000K
- Lumens: 14,952 / 23,446 / 30,872
- Efficacy: Up to 156 lm/w
- 0-10V Dimming sensor & controls options
- Wireguard & Safety Tether options
- 120-277, 347-480 Input Voltage



FLHBV Linear High-Bay Value Series

INDUSTRIAL



- 24, 48"
- High Quality Isolated Driver 1-10V Dimming
- PF>0.90, Driver Efficiency>87%, THD<20%
- Suitable for Dry/Damp Locations
- Ideal for warehouses, gymnasiums and industrial



FWP Fidelux Wall Pack Series

COMMERCIAL / INDUSTRIAL



FWP-FC



FWP-NC



FWP-SNC



*7 YEAR WARRANTY AVAILABLE. CONTACT FACTORY FOR PRICING.

FWP-FC Full cut-off	FWP-NC Non-cut off	FWP-SNC Small non-cut-off
3000K / 4000K / 5000K		
5 wattage options	4 wattage options	2 wattage options
Aluminium housing		3 color options
120/277 & 347/480	0-10V Dim	DLC Premium
Full Cutoff	Non-Cutoff	Milky & Clear lens options

FFLD Flood Light Series

COMMERCIAL / INDUSTRIAL



IP65
RATED

*7 YEAR WARRANTY AVAILABLE. CONTACT FACTORY FOR PRICING.

- 12 - 300W
- 1280 - 37,300 Lumens
- Efficacy Up To 130 Lm/W
- Operating Temp: -40 – +40C
- 0-10V Dimming for units >80W
- Five mounting options
- For applications from landscape to parking lots



FPTA Post Top Acorn Series

OUTDOOR AREA



IP65
RATED

- CCT 3000K / 4000K / 5000K
- Replaces up to 200W HID
- Internal driver
- Classic design
- House-side shield available
- Standard black finish; available in custom colors



FAR Area Light Series

OUTDOOR AREA



IP65
RATED

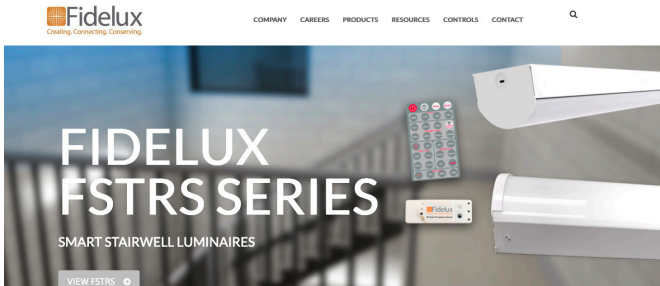


DISTRIBUTION
TYPES
III, IV, V

*10 YEAR WARRANTY AVAILABLE. CONTACT FACTORY FOR PRICING.

- CCT 3000K / 4000K / 5000K
- 75W, 100W, 150W, 220W, 300W
- Efficacy up to: 139 lm/w
- Voltage: 100-277VAC / 347-480 VAC
- Mounting: Pole, Pendant, Slip Fit, U Bracket
- Photo control available
- Standard 4kV surge with 10kV option





FIDELUX IS STILL SHIPPING DURING THIS PANDEMIC



FIDELUX POPULAR PRODUCTS



FPP - FLAT PANEL SERIES



FWP-FC - WALL PACK, FULL CUTOFF SERIES



FFLD - FLOOD LIGHT SERIES



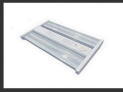
FPTA - POST TOP SERIES (ACORN)



FCL - COMPACT LINEAR SERIES



FTTR - ARCHITECTURAL TROFFER SERIES



FPLH - PREMIER LINEAR HIGHWAY

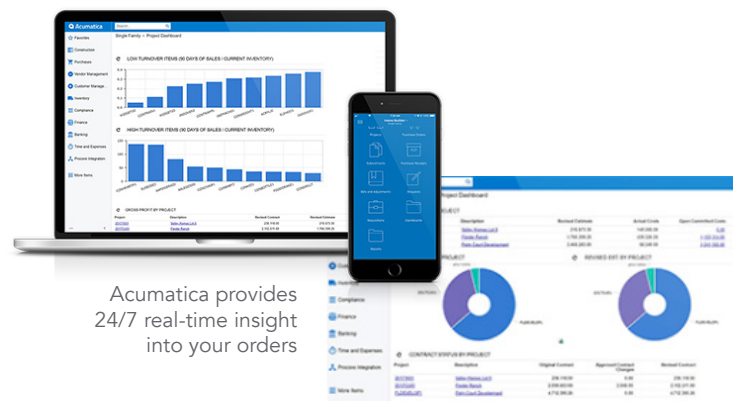
WEBSITE

Our website is your primary resource for product research and downloading the most up-to-date product information including new releases, specifications, ixs files, and ever-expanding range of product applications.

Acumatica

Fidelux is thrilled to offer our reps access to Acumatica ERP – a system that provides **24/7** cloud data via desktop, tablet, and mobile to view order processing, shipping, tracking, and invoicing information, all in **real time**.

This information thus assures you, our customer, precise inventory levels, ship dates, and tracking information, enabling you to always keep your contractors and your team current. This is just one of the ways we enhance your buying experience with Fidelux by providing exceptional customer service.





www.fidelux.com

180 Johnson Street
Middletown, CT 06457
(203) 774-5653
info@fidelux.com